

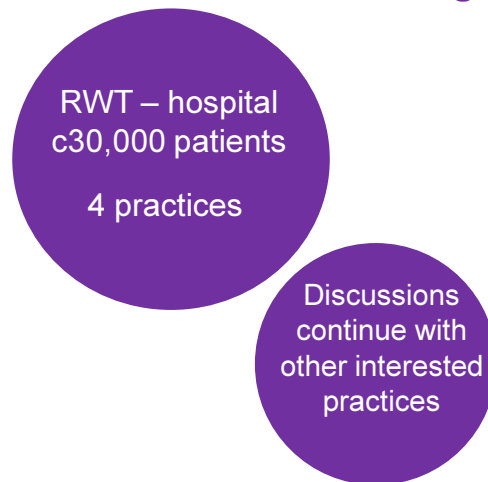
New Models of Care (Wolverhampton)

Multi-speciality Care Provider is a new deal for GP's as part of the 5 Year Forward View. This would take the shape of being a collaboration of a group practices i.e. federations, networks or single organisation(s). This is not only an opportunity to standardise back office functions and avoid replication but also a way of expanding leadership to include many healthcare professionals. Across the grouping there will be a collaborative approach to service provision whilst there will be a greater convenience for patients shifting the majority of outpatient consultations & ambulatory care out of hospital settings.

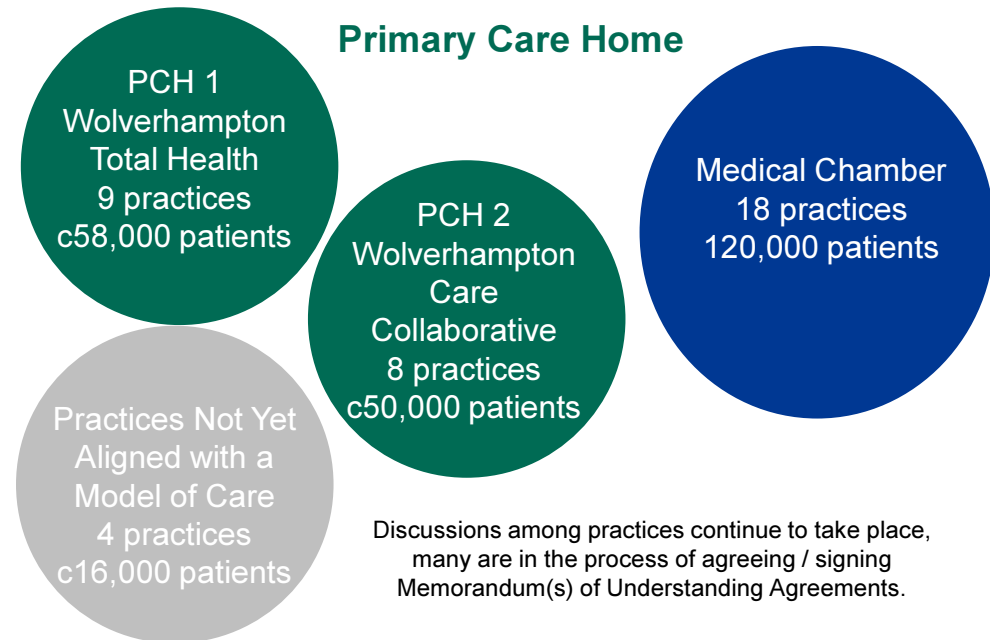
Primary & Acute Care Systems (PACs/VI) is a collaboration between NHS Trusts and GP Practices to meet the needs of registered list(s) of patients. This is an opportunities for trust's to kick-start primary care expansion but reinforce out of hospital care which could evolve into taking accountability for all health needs of a registered list of patients. Part of Vertical Integration is a greater level of back office support which is intended to improve the business element of General Practice.

Primary Care Home is a joint NAPC and NHS confederation programme. Primary Care Home Model is based on care hubs/neighbourhood approach. Supported by the new models programme featuring provision of care to a defined, registered population between 30-50,000 people, function with an integrated workforce with a strong focus on partnerships spanning primary/secondary/social care, a combined focus on the personalisation of care with improvements in population health outcomes, alignment of clinical & financial drivers with appropriate shared risks and rewards.

Vertical Integration (VI)



Primary Care Home



Discussions among practices continue to take place, many are in the process of agreeing / signing Memorandum(s) of Understanding Agreements.